



REDIT
INNOVATION NETWORK

THE IMPACT OF
REDIT'S TECHNOLOGICAL INSTITUTES
ON COMPANIES AND THE REGIONAL ECONOMY



PUBLISHED BY: Network of the Technological Institutes of the Valencian Community
(REDIT), Avda. Leonardo Da Vinci, 48. Parque Tecnológico de Paterna. Valencia (Spain)
Tel. +34 961 366 688 www.redit.es



REDIT, in collaboration with the Complutense University of Madrid, has conducted a study called 'Measuring the impact of REDIT Technology Institutes on business results'.

This report is an update of a previous study, published in 2013, corresponding to REDIT's interest in assessing the results of its activities and quantify their impact.

The data analysed in this study correspond to the period 2010-2015, which was characterised by a deep economic crisis affecting all levels of the economy.

METHODS

Technological Innovation Surveys with Companies in the National Statistics Institute (INE) carried out during the **period 2010-2015**



Around **92.000** observations, of which **32.000** correspond to companies collaborating with several partners in carrying out their R&D&I projects.

Comparative analyses to estimate the effect of collaboration with REDIT's Technological Institutes on business results.

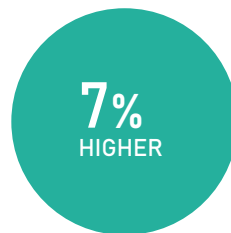
THE EFFECTS OF COLLABORATION WITH REDIT IS THAT COMPANIES...

1

INCREASE THEIR PRODUCTIVITY

Companies collaborating with REDIT's Technological Institutes present labour productivity, defined as turnover per employee, which is 7% higher than that of companies not collaborating with external partners for innovation

- Productivity with collaboration
- Estimated productivity without collaboration



Effect of collaboration on productivity (€/employee)

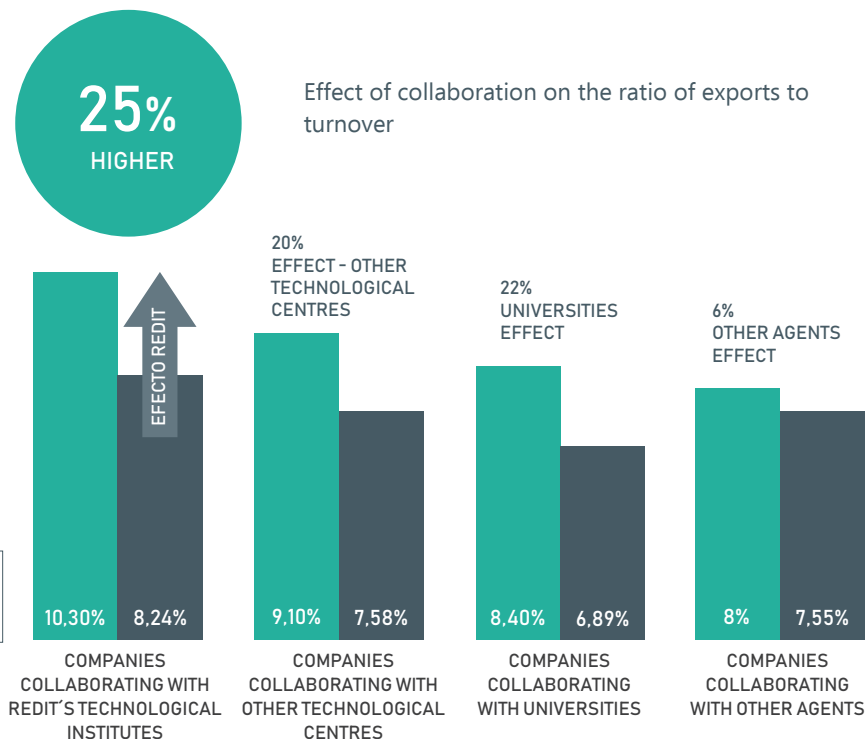
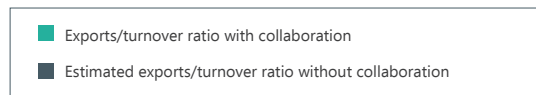


COMPANIES COLLABORATING
WITH REDIT'S TECHNOLOGICAL
INSTITUTES

2 EXPORT MORE

The value of REDIT company exports in relation to turnover to countries outside the EU is **25% higher** than that of companies not collaborating with external partners for innovation.

Furthermore, at EU level, collaboration with a Technological Institute increases the probability of companies exporting by **7,7** percentage points.



THE EFFECTS OF COLLABORATION WITH REDIT IS THAT COMPANIES...

3

DEVELOP MORE PRODUCT INNOVATIONS

The percentage of companies collaborating with REDIT's Technological Institutes which introduce product innovations is **12** percentage points higher than that of companies not collaborating with external agents for innovation.

12

PERCENTAGE
POINTS HIGHER

4

ARE MORE ACTIVE IN INTERNAL R&D PROJECTS

Companies collaborating with REDIT Technological Institutes carry out internal R&D activities with a frequency **20** percentage points higher than that of companies not collaborating with external agents for innovation.

20

PERCENTAGE
POINTS HIGHER

5

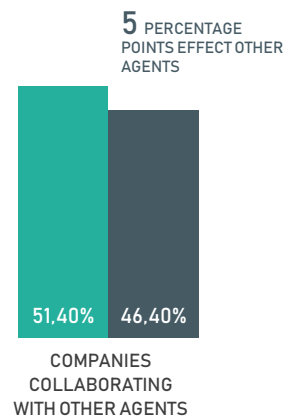
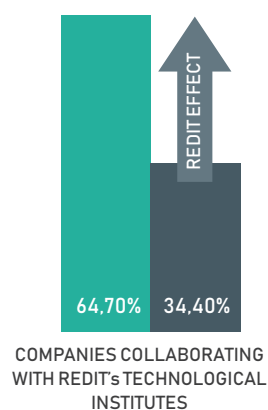
ATTRACT MORE PUBLIC FUNDING

Companies collaborating with REDIT's Technological Institutes have a probability of raising funds from Public Administrations that is **30** percentage points higher than that of companies not collaborating with external agents for innovation.

- Probability of raising public funds with collaboration
- Estimated probability of raising public funds without collaboration



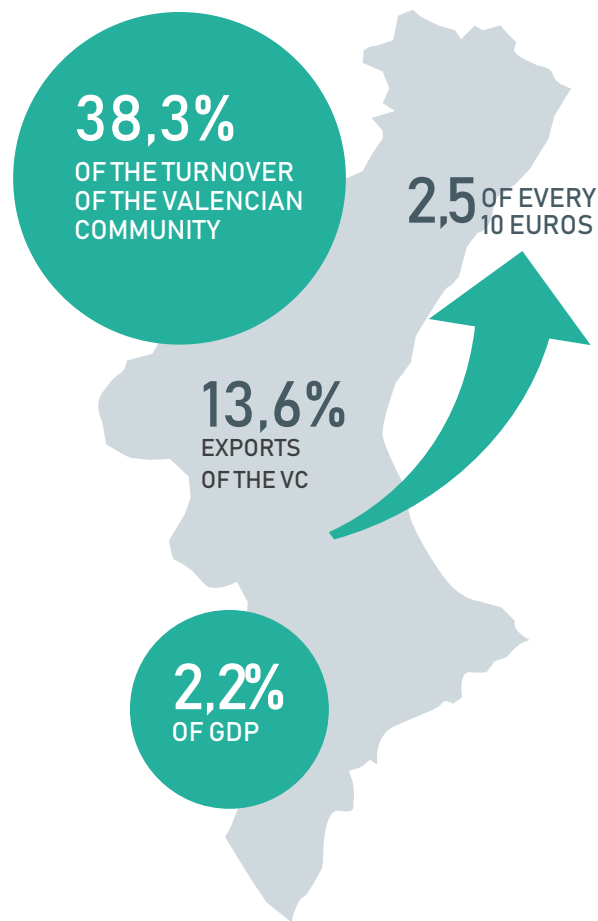
Effect of collaboration on the public financing of R&D&I by companies.



THE IMPACT OF TECHNOLOGICAL INSTITUTES ON THE REGIONAL ECONOMY

Considering that REDIT's Technological Institutes work with over 10.000 companies a year, it is estimated that:

- Companies choosing REDIT's Technological Institutes as their preferred collaboration partner represent **38,3% of turnover in the Valencian Community**.
- **Exports** from these companies **to countries outside the EU account for 13,6%** of total exports from the Valencian Community. In addition, **2,5 out of every 10 euros of their export volume** can be attributed to the impact of REDIT Centres.
- The effect of REDIT's Technological Institutes on the economy of the Valencian Community is over **2,2% of GDP**, and is therefore over €2.14 billion.



REDIT IN NUMBERS

2017



1.450
PROFESSIONALS

12.700
CLIENTS

5.100
MEMBERS

800
R&D&I PROJECTS

% REVENUE BY SOURCE OF FINANCING

COMPANIES

64%
COMPANIES

COMPETITIVE PUBLIC FUNDING

24%
AUTONOMOUS

3%
NATIONAL

9%
EUROPEAN

REDIT'S TECHNOLOGICAL INSTITUTES RECEIVED €97 million

TECHNOLOGICAL INSTITUTES RAISE AN AVERAGE OF **€70,5 MILLION** EVERY YEAR FROM NATIONAL AND EUROPEAN FUNDS FOR THEMSELVES AND THEIR CLIENT COMPANIES



For every euro of regional public funding, the Technology Institutes attracted **2,5 euros of national and European funding** to the Valencian Community.

DIRECTORY



AIDIMME
Technology Park
Avda. Benjamín Franklin, 13
46980 Paterna, Valencia
Tel. (+34) 96 136 60 70
www.aidimme.es



AIJU
Avda. de la Industria, 23
03440 Ibi, Alicante
Tel. (+34) 96 555 44 75
www.aiju.es



AITEEX
Plaza Emilio Sala 1 E
03801 Alcoy, Alicante
Tel. (+34) 96 554 22 00
www.aiteex.es



IBV
Polytechnic University of
Valencia
Camino de Vera, s/n
46022 Valencia
Tel. (+34) 96 111 11 70
www.ibv.org



ITE
Technology Park
Avda. Juan de la Cierva, 24
46980 Paterna, Valencia
Tel. (+34) 96 136 66 70
www.ite.es



ITENE
Technology Park
C/ Albert Einstein, 1
46980 Paterna, Valencia
Tel. (+34) 96 390 54 00
www.itene.com



AIMPLAS

Technology Park
Avda. Gustave Eiffel, 4
46980 Paterna, Valencia
Tel. (+34) 96 136 60 40
www.aimplas.es



INESCOP

Pol. Industrial Campo Alto
Apdo. Correos 253
03600 Elda, Alicante
Tel. (+34) 96 539 52 13
www.inescop.es



ITI

Polytechnic University of Valencia
Camino de Vera, s/n
46022 Valencia
Tel. (+34) 96 387 70 69
www.iti.es



AINIA

Technology Park
Avda. Benjamín Franklin, 5-11
46980 Paterna, Valencia
Tel. (+34) 96 136 60 90
www.ainia.es



ITC

University Campus Riu Sec
Avda. Vicent Sos Baynat, s/n
12006 Castellón
Tel. (+34) 96 434 24 24
www.itc.uji.es

REDIT

Avda. Leonardo da Vinci nº 48
Technology Park 46980
Paterna, Valencia
Tel. (+34) 96 136 66 88
www.redit.es





FINANCED BY



GENERALITAT
VALENCIANA

TOTS
A UNA
veu



AVI

AGÈNCIA VALENCIANA
DE LA INNOVACIÓ